

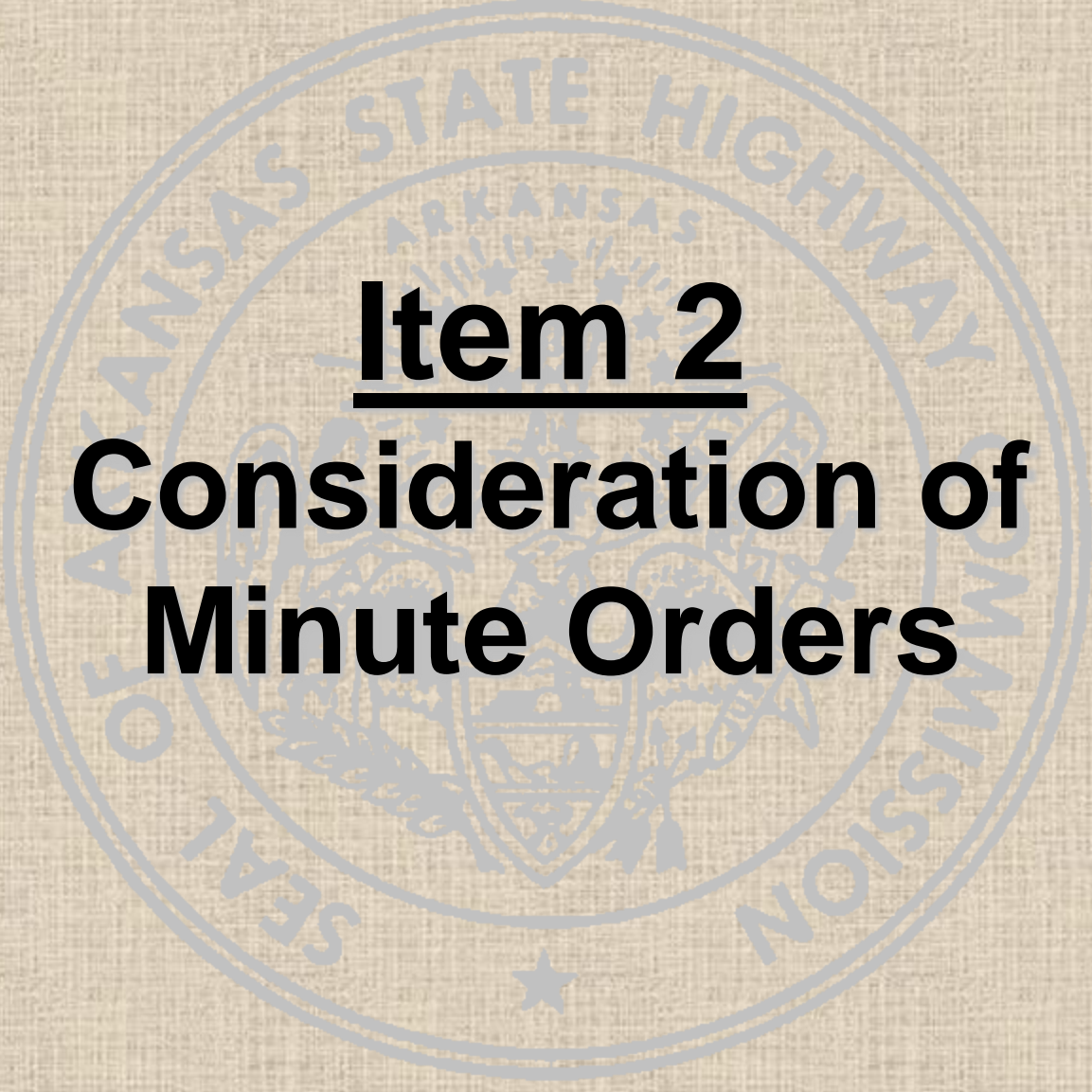


Arkansas State Highway Commission Meeting

Wednesday, July 24, 2013

The background features a large, faint, circular seal of the Arkansas State Highway Commission. The seal contains the text "ARKANSAS STATE HIGHWAY COMMISSION" around the perimeter and a central emblem with a shield and stars.

Item 1
Minutes
June 5, 2013 Meeting

The background features a large, faint, circular seal of the Arkansas State Highway Commission. The seal contains the text "ARKANSAS STATE HIGHWAY COMMISSION" around the perimeter and a central emblem with a shield and stars.

Item 2
**Consideration of
Minute Orders**

The background features a large, faint, circular seal of the Arkansas State Highway Commission. The seal contains the text "ARKANSAS STATE HIGHWAY COMMISSION" around the perimeter and "ARKANSAS" in the center. In the center of the seal is the state emblem of Arkansas, which depicts a plow, a sheaf of wheat, and a cotton plant, with a star above them.

Item 3

**Keep Arkansas Beautiful
Presentation**



**KEEP
ARKANSAS
BEAUTIFUL**





Item 4

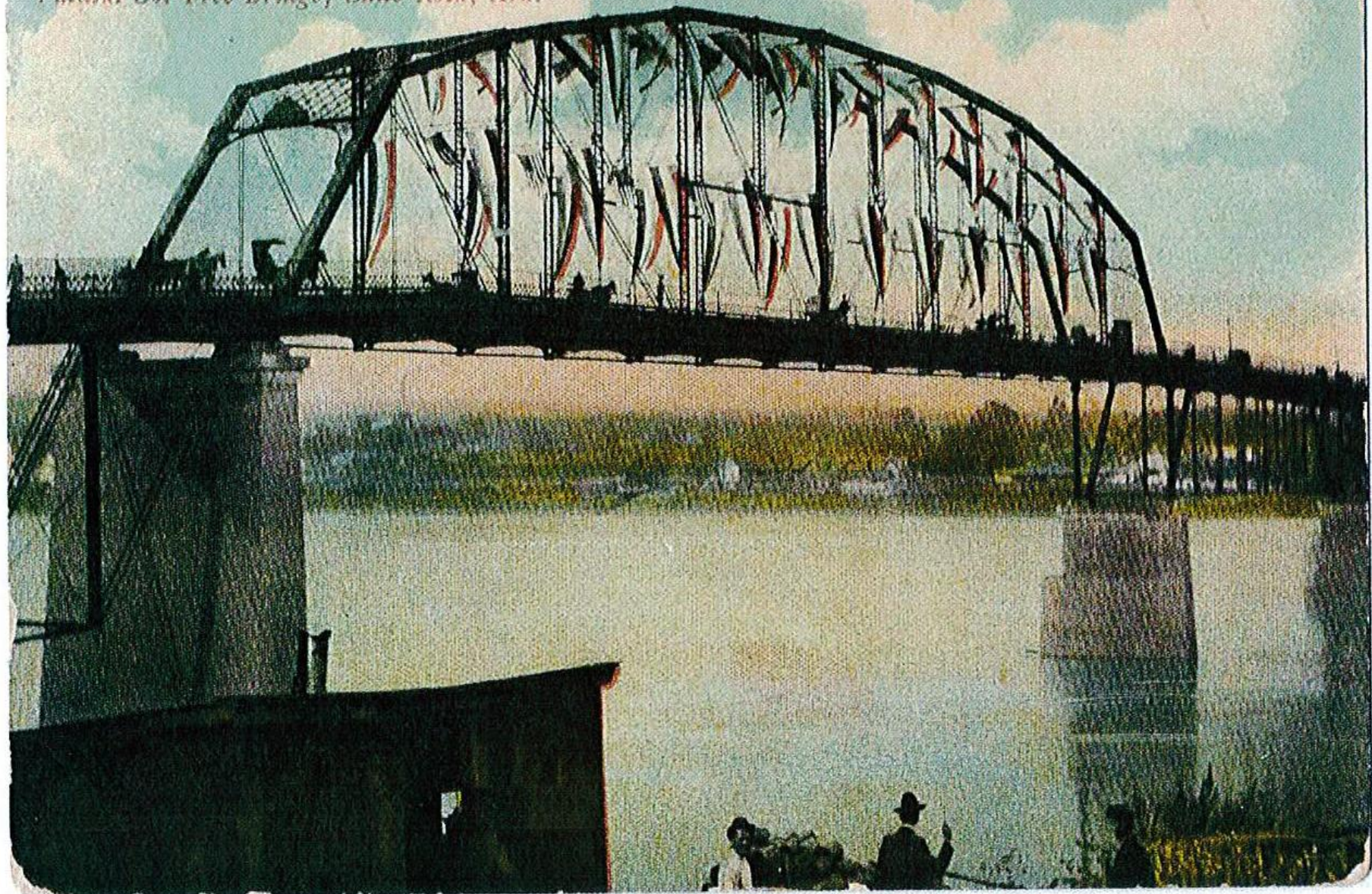
**Highway 70 Broadway
Bridge Presentation**

PAST

PRESENT

FUTURE

Pulaski Co. Free Bridge, Little Rock, Ark.



3—BROADWAY BRIDGE, LITTLE ROCK, ARK.



2A-11039

MAIN STREET BRIDGE LITTLE ROCK, ARKANSAS







AMERICA'S BRIDGE™

DEDICATED TO THOSE WHO FOUGHT FOR FREEDOM
AND WORKED FOR PEACE



EXTENDED Stay America

Ready to meet back

LE. 7-31 BANK

LEFT LANE
MUST
TURN LEFT







AMERICA'S BRIDGE™

DEDICATED TO THOSE WHO FOUGHT FOR FREEDOM
AND WORKED FOR PEACE



AMERICA'S BRIDGE™

DEDICATED TO THOSE WHO FOUGHT FOR FREEDOM
AND WORKED FOR PEACE



AMERICA'S BRIDGE™

DEDICATED TO THOSE WHO FOUGHT FOR FREEDOM
AND WORKED FOR PEACE



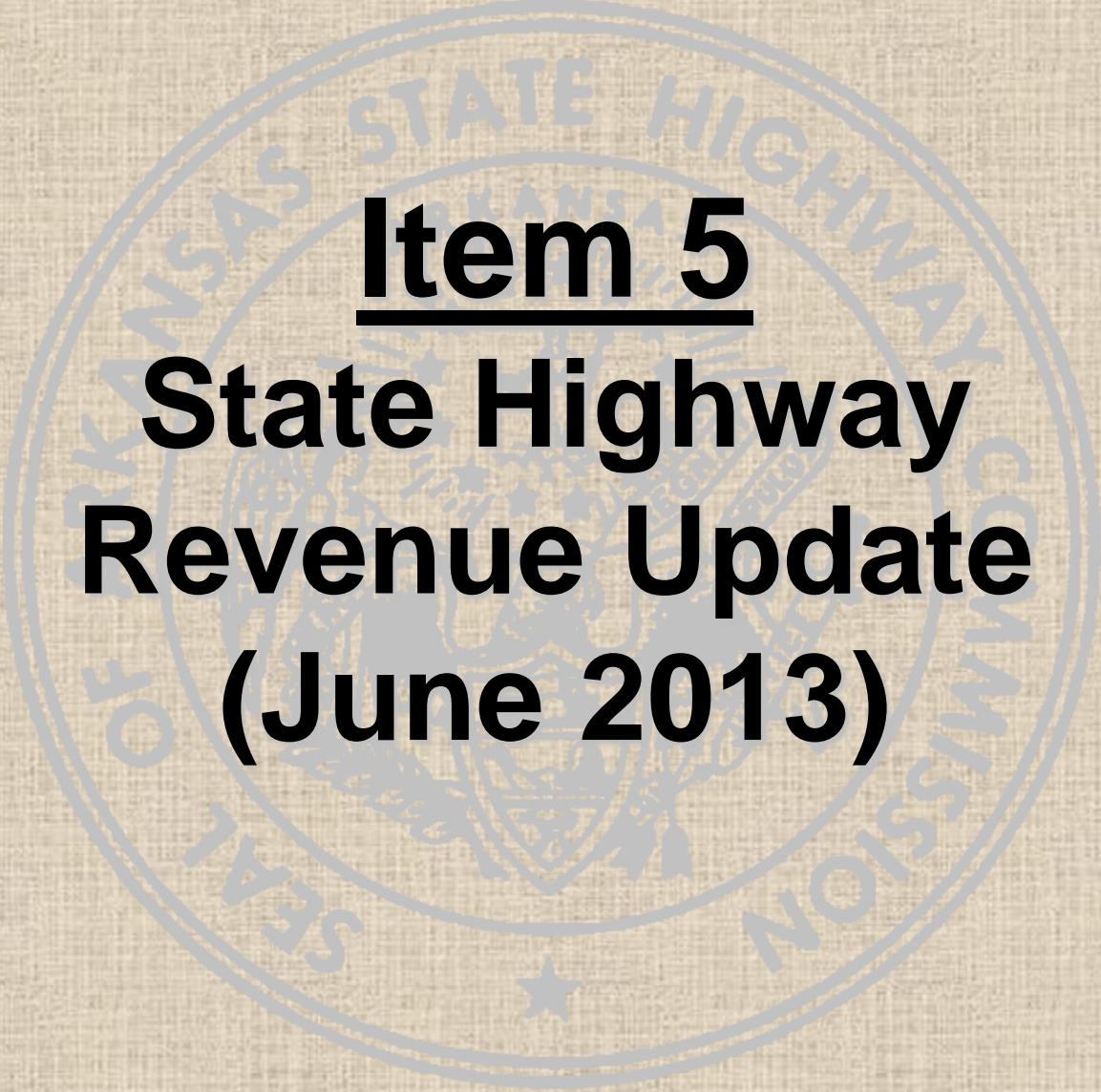
AMERICA'S BRIDGE™

DEDICATED TO THOSE WHO FOUGHT FOR FREEDOM
AND WORKED FOR PEACE



AMERICA'S BRIDGE™

DEDICATED TO THOSE WHO FOUGHT FOR FREEDOM
AND WORKED FOR PEACE

The background features a large, faint, circular seal of the Kansas State Highway Commission. The seal contains the text "KANSAS STATE HIGHWAY COMMISSION" around the perimeter and a central emblem with a star.

Item 5
**State Highway
Revenue Update
(June 2013)**

Revenues and Consumption

June 2013

REVENUES

Comparison of AHTD State Revenues by Fiscal Year

		FY 2012	FY 2013	Variance	Percent
July - June		(Millions)	(Millions)	(Millions)	Change
	Motor Fuel Taxes	\$287.7	\$271.3	(\$16.4) *	-5.7%
	Registration Fees	\$85.0	\$82.1	(\$2.9)	-3.4%
	Permits & Penalties	\$20.0	\$18.0	(\$2.0)	-10.0%
	Other	\$5.4	\$7.9	\$2.5	46.3%
	Total User Revenues	\$398.1	\$379.3	(\$18.8)	-4.7%
	Natural Gas Severance Tax	\$33.7	\$32.3	(\$1.4)	-4.2%
	RRA Interest	\$3.2	\$3.3	\$0.1	3.1%
	Less: Diesel Tax for Bonds	(\$15.2)	(\$16.5)	(\$1.3)	8.6%
	Total Revenues Available	\$419.8	\$398.4	(\$21.4)	-5.1%

Fiscal Year 2013 Budget vs. Actual

		Budget	Actual	Variance	Percent
July - June		(Millions)	(Millions)	(Millions)	Variance
	Motor Fuel Taxes	\$275.4	\$271.3	(\$4.1)	-1.5%
	Registration Fees	\$78.5	\$82.1	\$3.6	4.6%
	Permits & Penalties	\$19.6	\$18.0	(\$1.6)	-8.2%
	Other	\$5.6	\$7.9	\$2.3	41.1%
	Total User Revenues	\$379.1	\$379.3	\$0.2	0.1%
	Natural Gas Severance Tax	\$25.3	\$32.3	\$7.0	27.7%
	RRA Interest	\$2.4	\$3.3	\$0.9	37.5%
	Less: Diesel Tax for Bonds	(\$17.0)	(\$16.5)	\$0.5	2.9%
	Total Revenues Available	\$389.8	\$398.4	\$8.6	2.2%

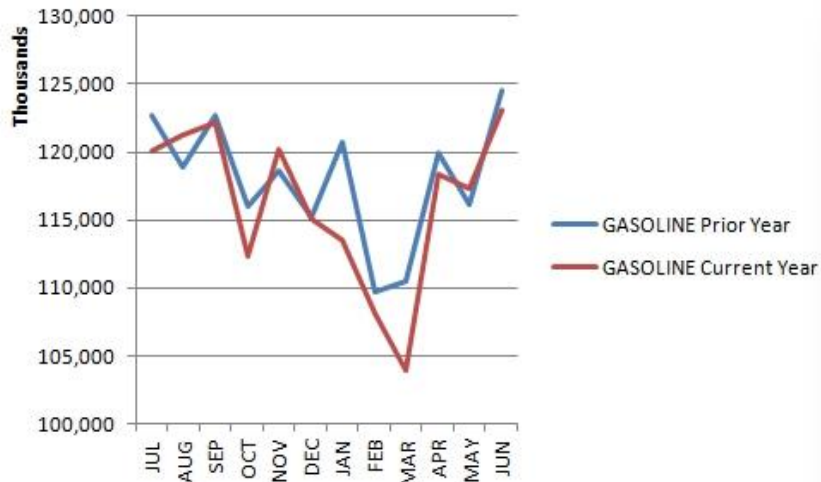
CONSUMPTION

Taxable Motor Fuel Gallons Reported

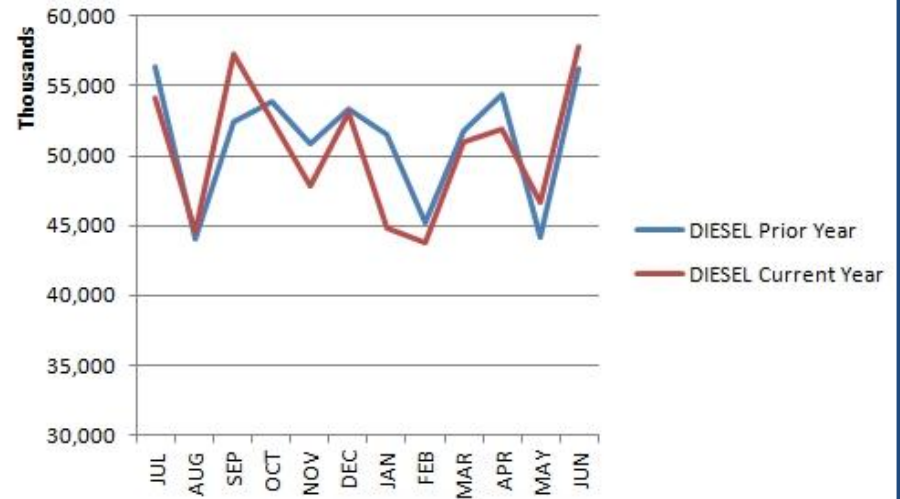
		FY 2012	FY 2013	Difference	Percent
July - June		(Millions)	(Millions)	(Millions)	Change
	Gasoline	1,416.2	1,395.3	-20.9	-1.5%
	Diesel	614.1	605.1	-9.0	-1.5%
	Total	2,030.3	2,000.4	-29.9	-1.5%

Fuel Consumption

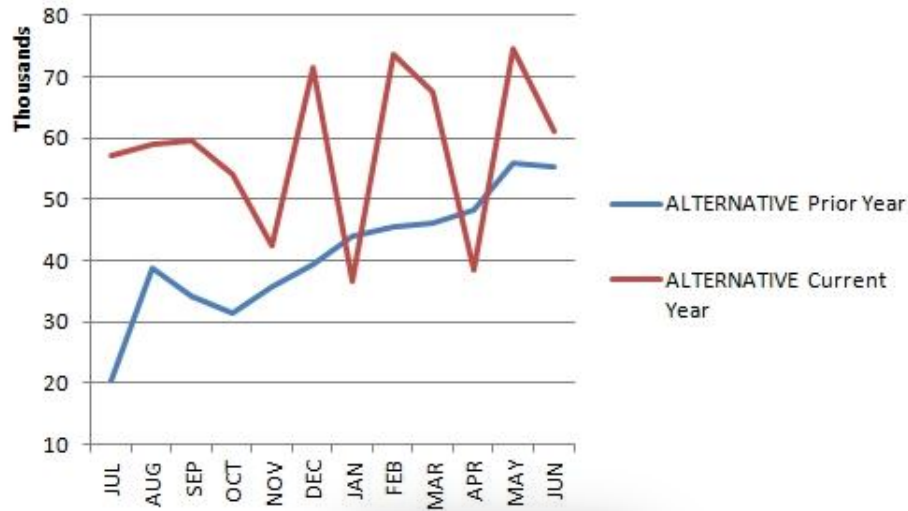
July 2012 - June 2013



Gasoline



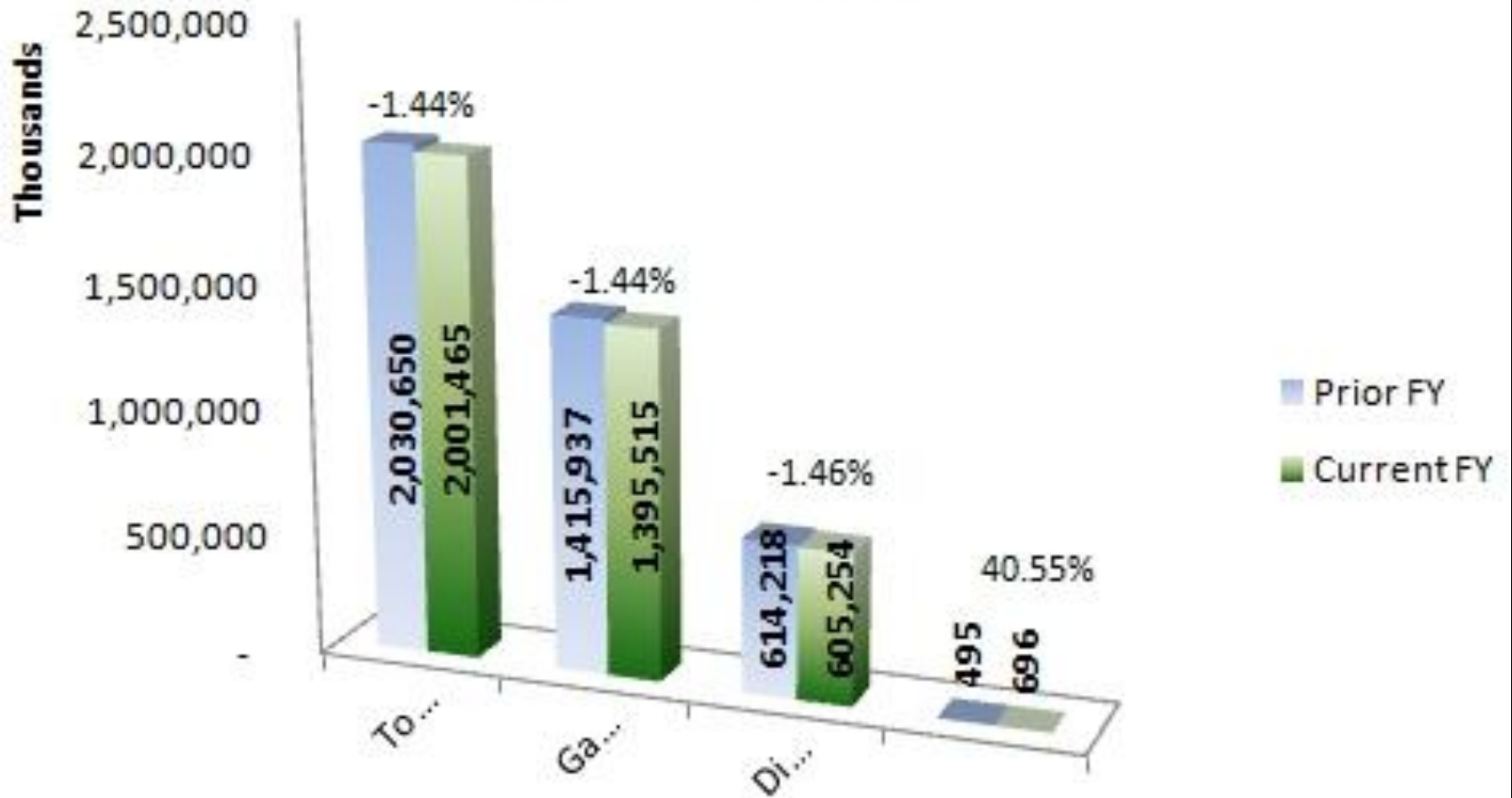
Diesel



Alternative

Fuel Consumption

Gallons



The background of the slide features a large, faint, circular seal of the Arkansas State Highway Commission. The seal contains the text "ARKANSAS STATE HIGHWAY COMMISSION" around the perimeter and "ARKANSAS" in the center. In the center of the seal is a smaller emblem with a star and the date "1836".

Item 6

Status of Federal Highway and Transit Funding Issues



Highway Trust Fund

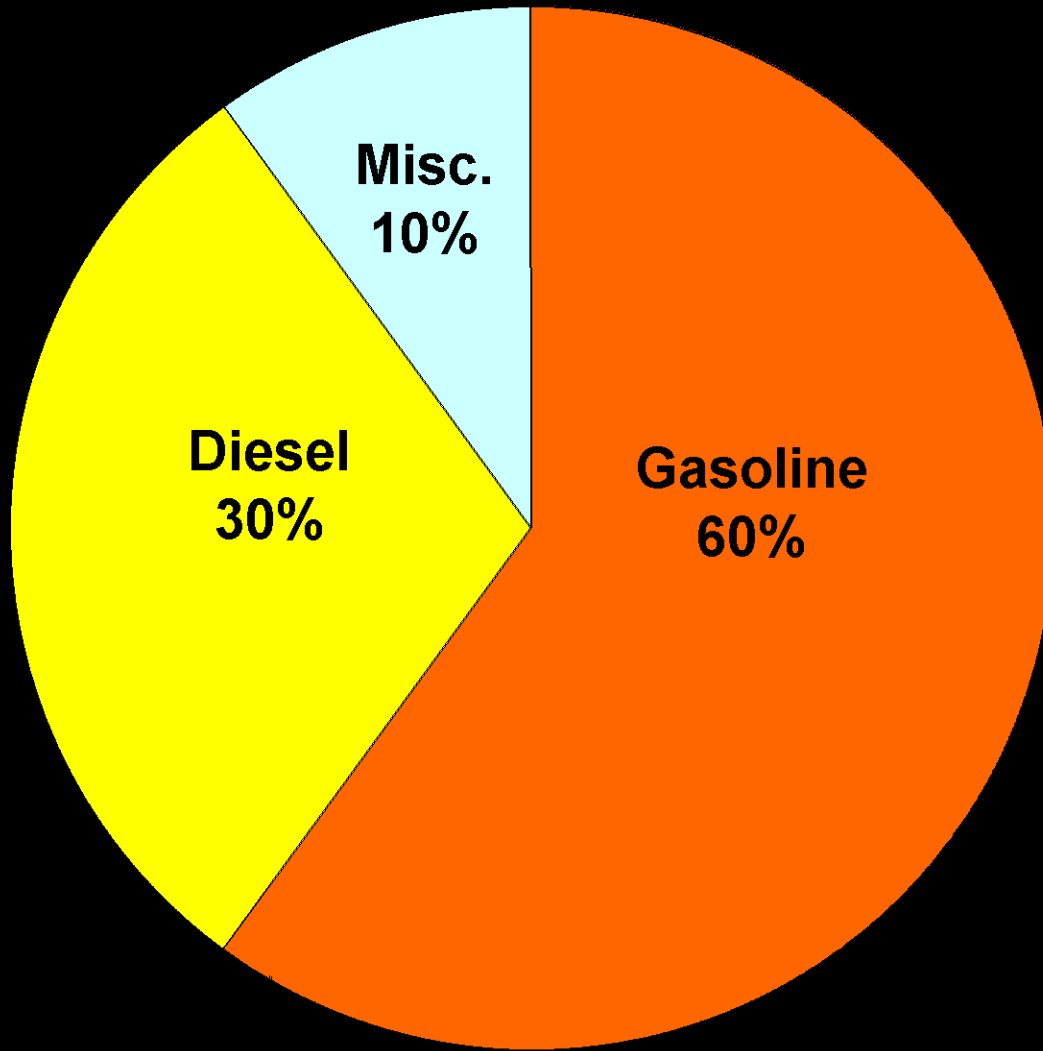
• History

- ✓ Established by the Federal-Aid Highway Act of 1956

• User Taxes

- ✓ Created as a “User-Supported” Fund
- ✓ Revenues Intended for Financing Highways and Mass Transit

Highway Trust Fund Revenue Receipts



- Gasoline Tax - 18.4 cents/gallon
- Diesel Tax - 24.4 cents/gallon
- Miscellaneous taxes, including taxes on tires and heavy trucks



Highway Trust Fund

• Collection

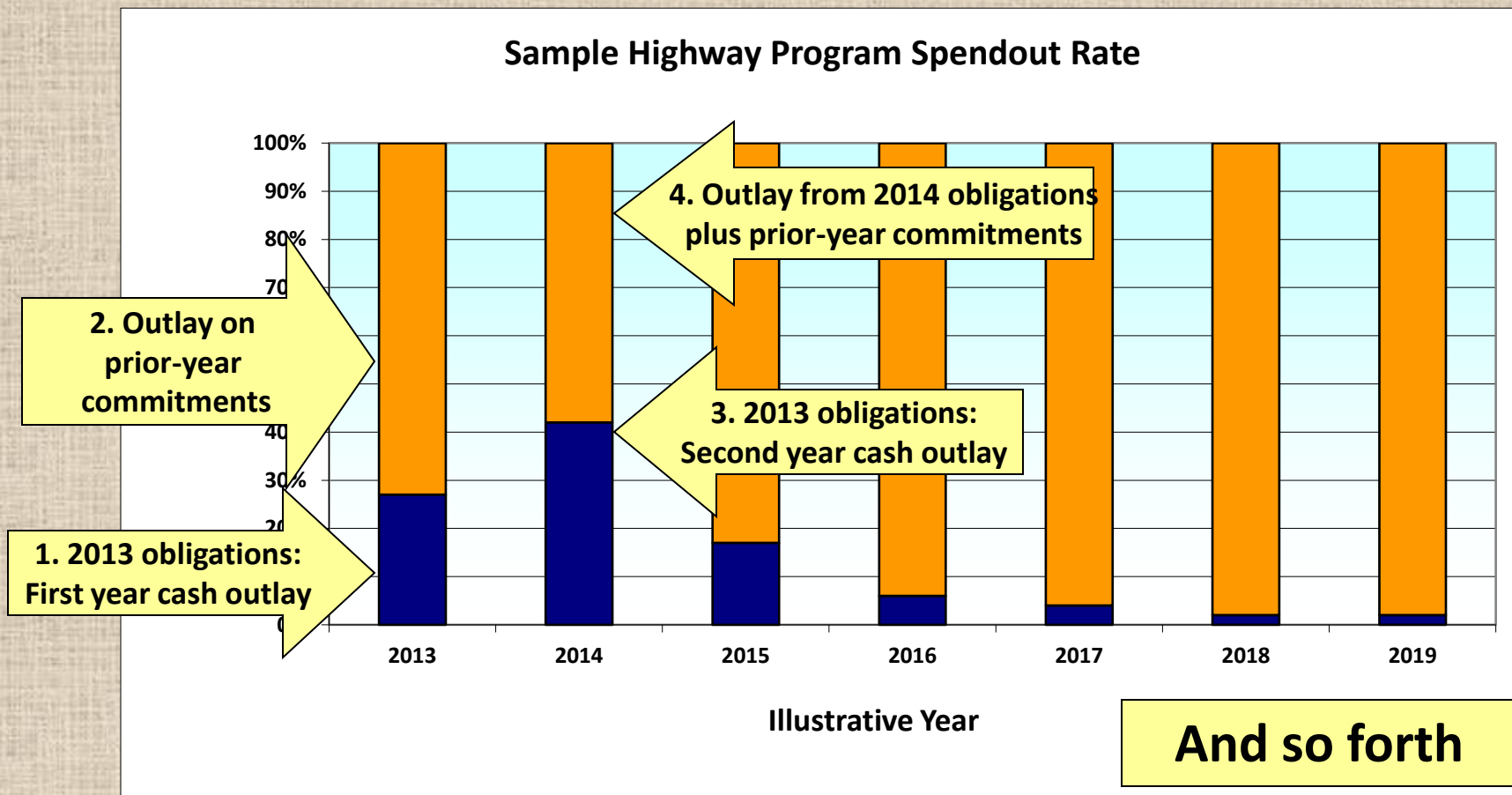
- ✓ Taxes Paid by Producer or Importer to the Internal Revenue Service
 - Motor Fuel
 - Tires
- ✓ Taxes Paid by Retailer
 - Trucks and Trailers
- ✓ Taxes Paid by Owner
 - Heavy Vehicle Use



Highway Trust Fund

- **Balance of the Highway Trust Fund**
 - ✓ Federal Highway Program – Reimbursable
 - ✓ Cash Balance
 - Not Excess
 - Needed for Reimbursement

Spend Out Rate of the Highway Trust Fund Typical Highway Construction Projects



Of any given year's obligation level (the Federal government's commitment to pay for projects), only 27% of that amount in cash outlay is expended from the Highway Trust Fund in the first year.

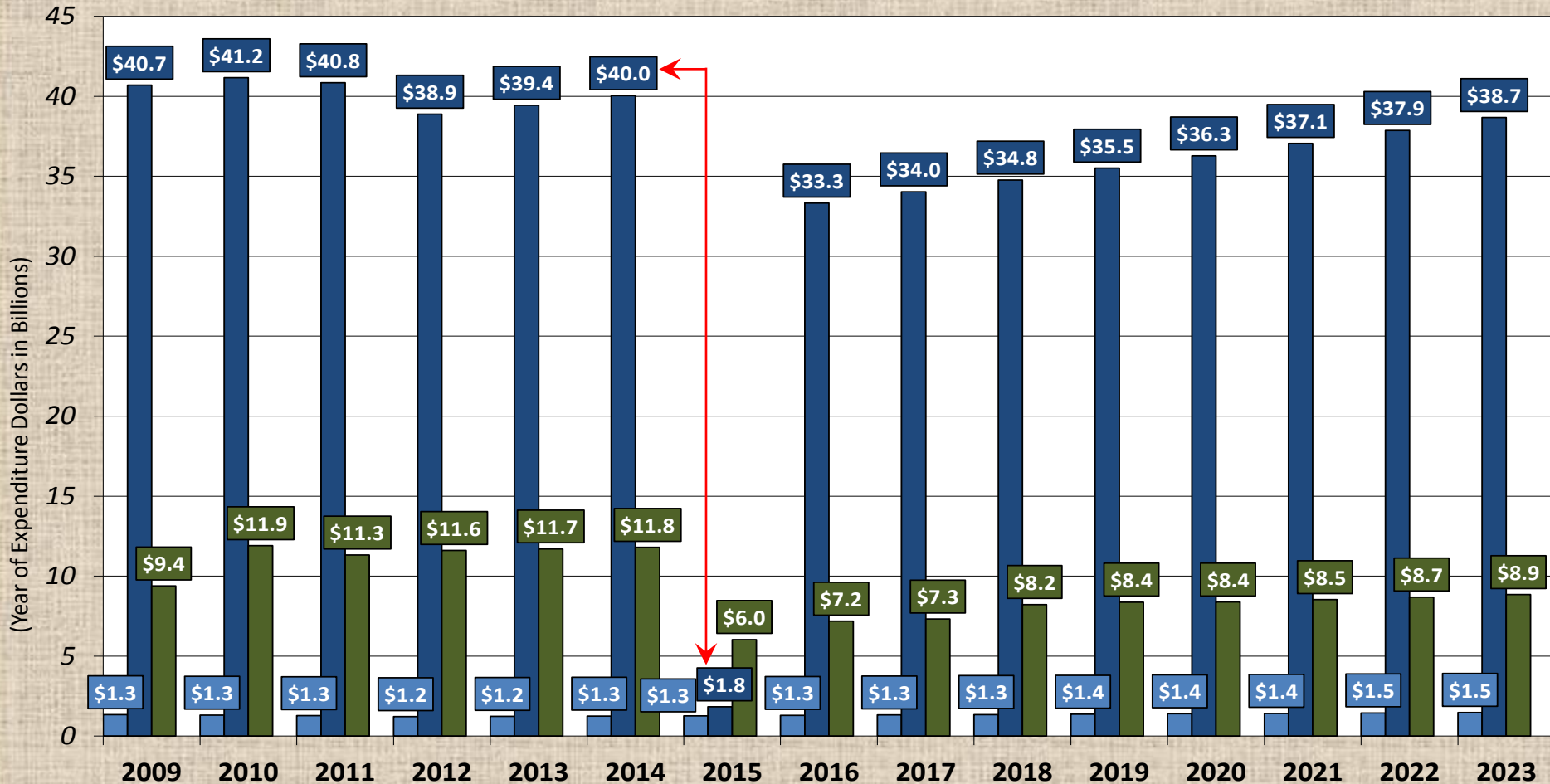
HIGHWAY TRUST FUND

ESTIMATED FEDERAL HIGHWAY AND TRANSIT PROGRAM FUNDING LEVELS WITH NO NET NEW REVENUES

Federal Highway and Transit Obligations Through 2023

Assumes a minimum balance of \$4 billion for the Highway Account and \$1 billion for the Mass Transit Account

Highway Safety Federal-aid Highway Transit



"PAYOUT RATE" OF TYPICAL HIGHWAY CONSTRUCTION PROJECTS

Year	1	2	3	4	5	6	7	TOTAL
Percent Payout	27%	42%	18%	6%	4%	2%	1%	100%

OUTLAYS

YEAR	2012	2013	2014	2015	2016	2017	2018	2020	2021	2022	2023	2024	2025	TOTAL
2009	2.4	1.6	0.8	0.4										
2010	7.4	2.5	1.6	0.8	0.4									
2011	17.1	7.3	2.4	1.6	0.8	0.4								
2012	10.5	16.3	7.0	2.3	1.6	0.8	0.4							38.9
2013		10.6	16.5	7.1	2.4	1.6	0.8	0.4						39.4
2014			10.8	16.8	7.2	2.4	1.6	0.8	0.4					40.0
2015				0.5	0.8	0.3	0.1	0.1	0.0	0.0				1.8
2016					9.0	14.0	6.0	2.0	1.3	0.7	0.3			33.3
2017						9.2	14.3	6.1	2.0	1.4	0.7	0.3		34.0
2018							9.4	14.6	6.3	2.1	1.4	0.7	0.3	34.8
2019								9.6	14.9	6.4	2.1	1.4	0.7	
2020									9.8	15.2	6.5	2.2	1.5	
2021										10.0	15.6	6.7	2.2	
2022											10.2	15.9	6.8	
2023												10.4	16.3	
2024													10.7	
TOTAL				30	22	29	33	34	35	36	37	38	38	



Projections of Highway Trust Fund Highway Account

YEAR	2012	2013	2014	2015	2016	2017	2018	2020	2021	2022	2023	2024	2025
Obligations	38.9	39.4	40.0	1.8	33.3	34.0	34.8	35.5	36.3	37.1	37.9	38.7	39.5

Start of Year Balance	14	10	5	5	9	22	29	32	35	36	36	34	33
Revenues	38	39	44	34	35	35	36	36	36	36	36	36	36
Outlays	(42)	(44)	(44)	(30)	(22)	(29)	(33)	(34)	(35)	(36)	(38)	(38)	(38)
Ending Balance	10	5	5	9	22	29	32	35	36	36	34	33	30

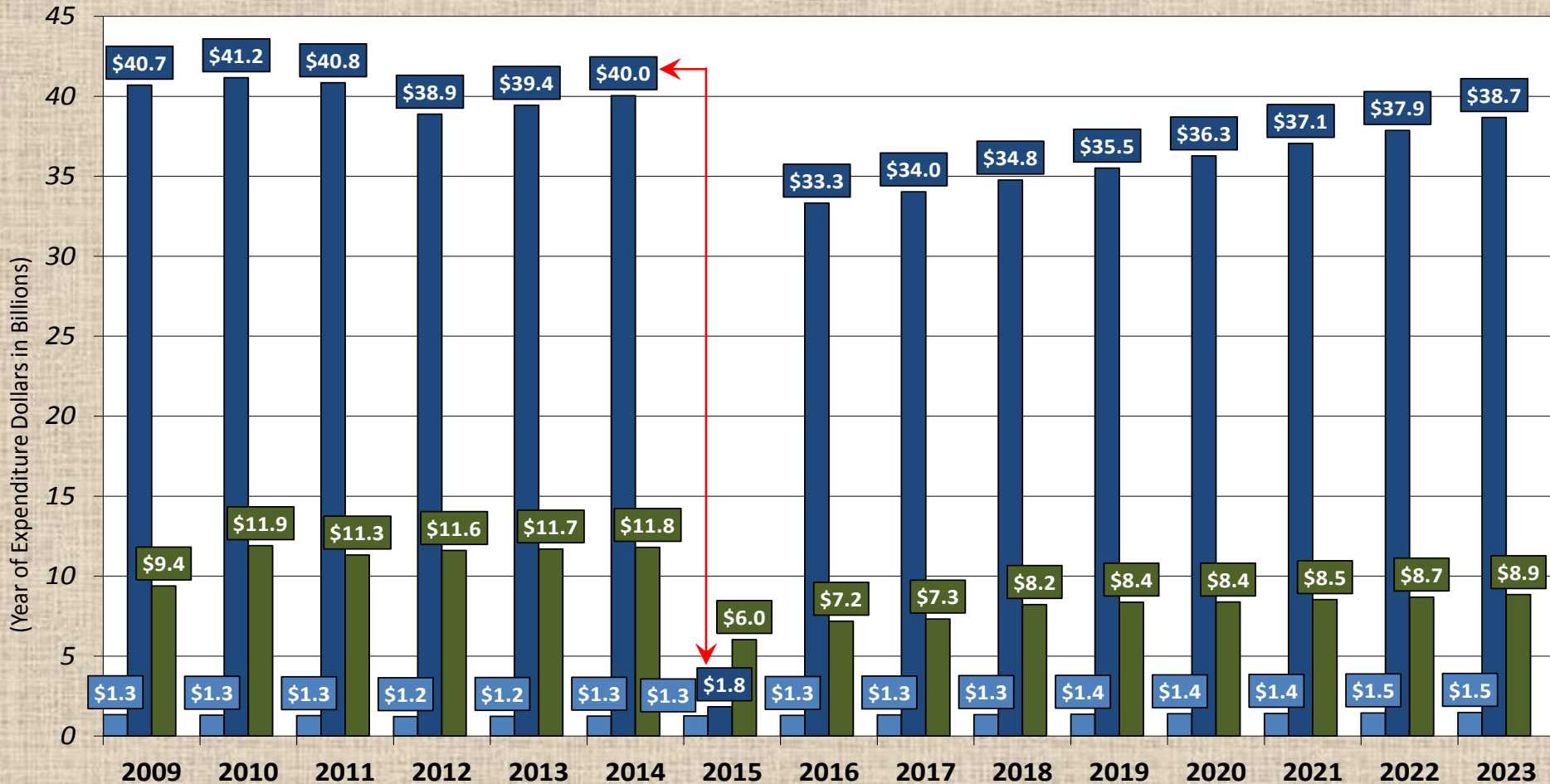
HIGHWAY TRUST FUND

ESTIMATED FEDERAL HIGHWAY AND TRANSIT PROGRAM FUNDING LEVELS WITH NO NET NEW REVENUES

Federal Highway and Transit Obligations Through 2023

Assumes a minimum balance of \$4 billion for the Highway Account and \$1 billion for the Mass Transit Account

Highway Safety Federal-aid Highway Transit

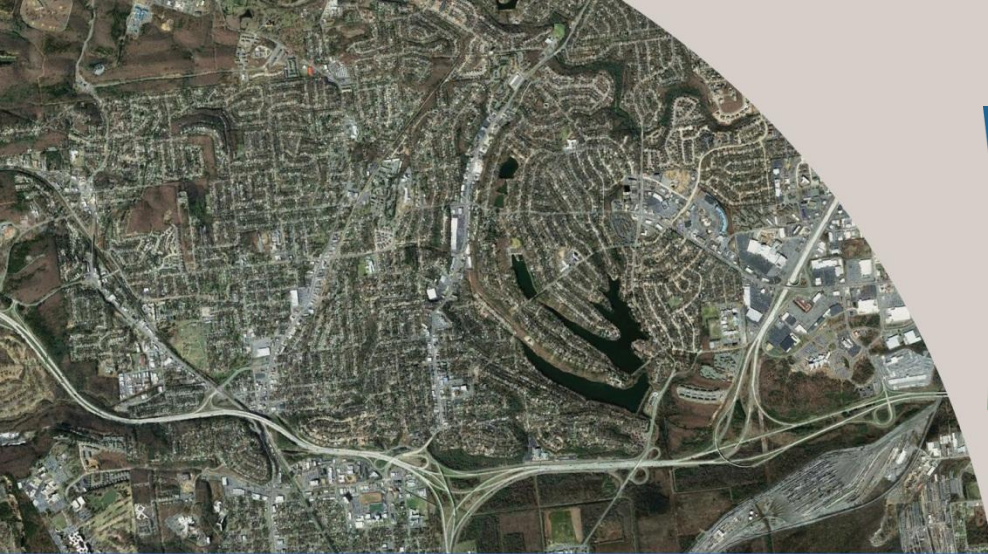


The background features a large, faint, circular seal of the Arkansas State Highway Department. The seal contains the text "ARKANSAS STATE HIGHWAY" at the top and "DEPARTMENT OF ARKANSAS STATE HIGHWAY" at the bottom. In the center of the seal is the state seal of Arkansas, which includes a figure holding a bow and arrow, with a star above and below. The seal is rendered in a light blue or grey color.

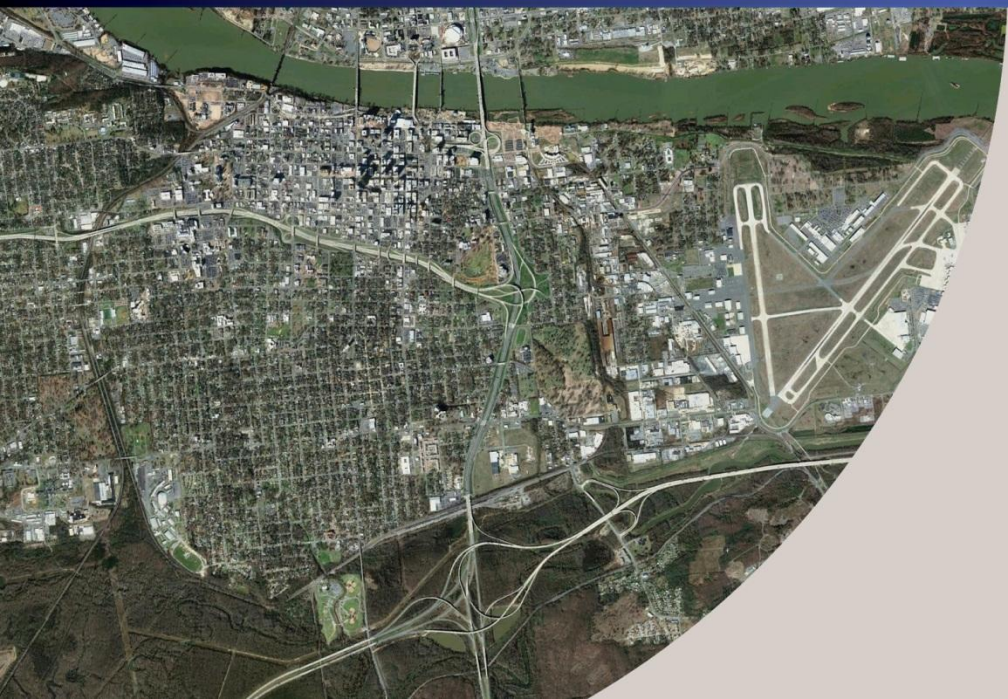
Item 7

**Connecting Arkansas
Program**

Draft Project Schedule



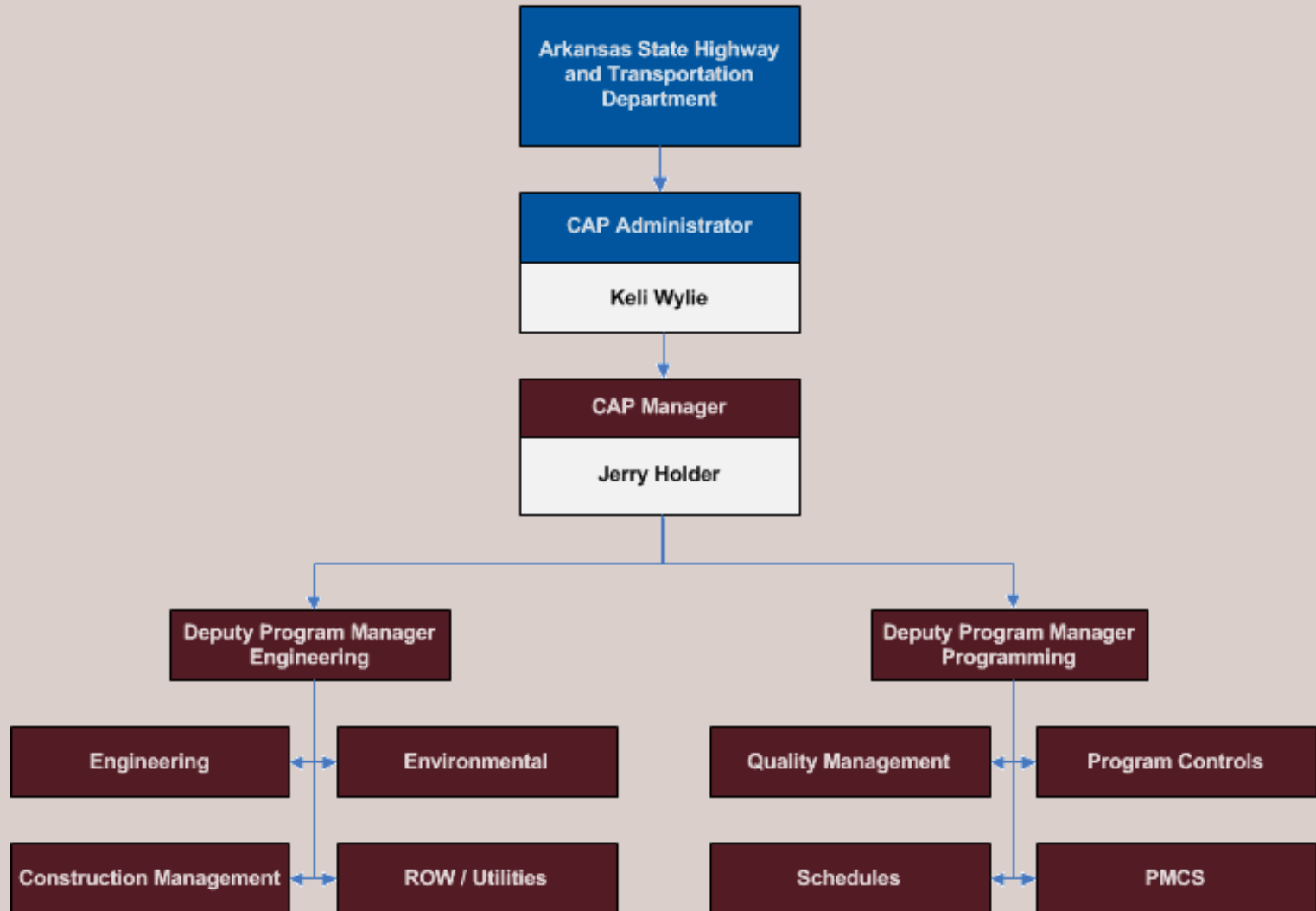
Connecting Arkansas Program Update



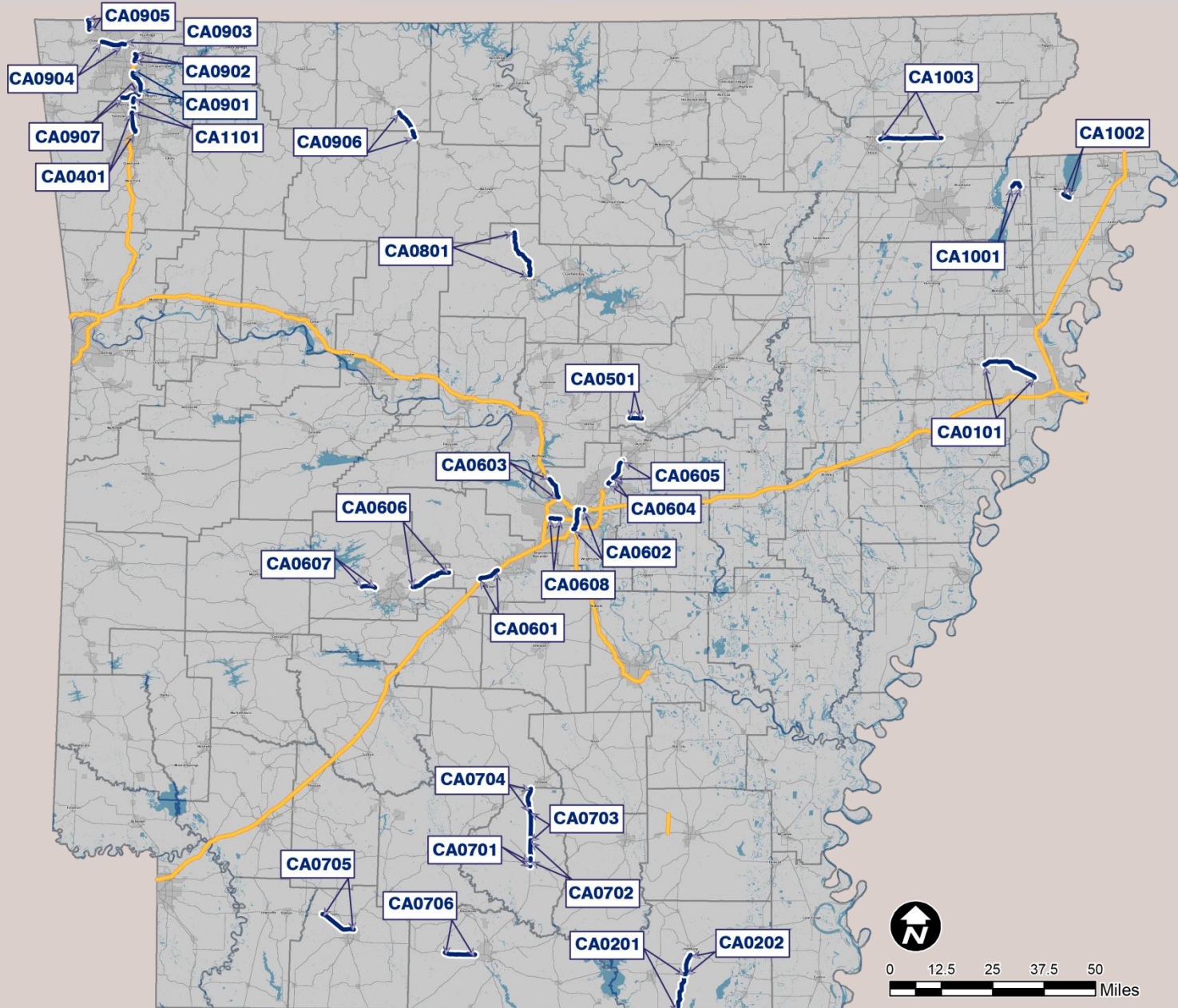
Jerry Holder, Garver, CAP Manager
July 24, 2013



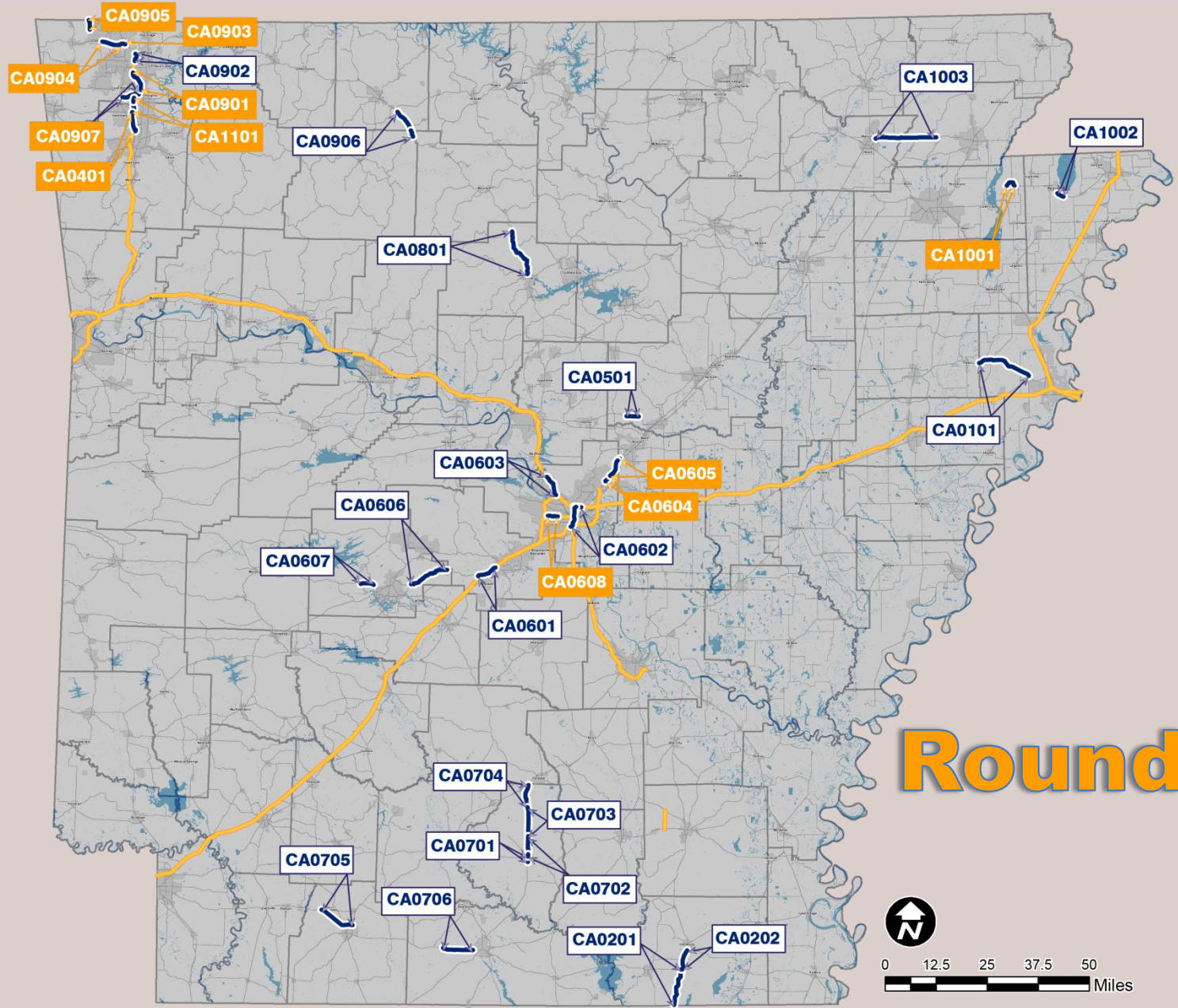
Garver Program Management Team



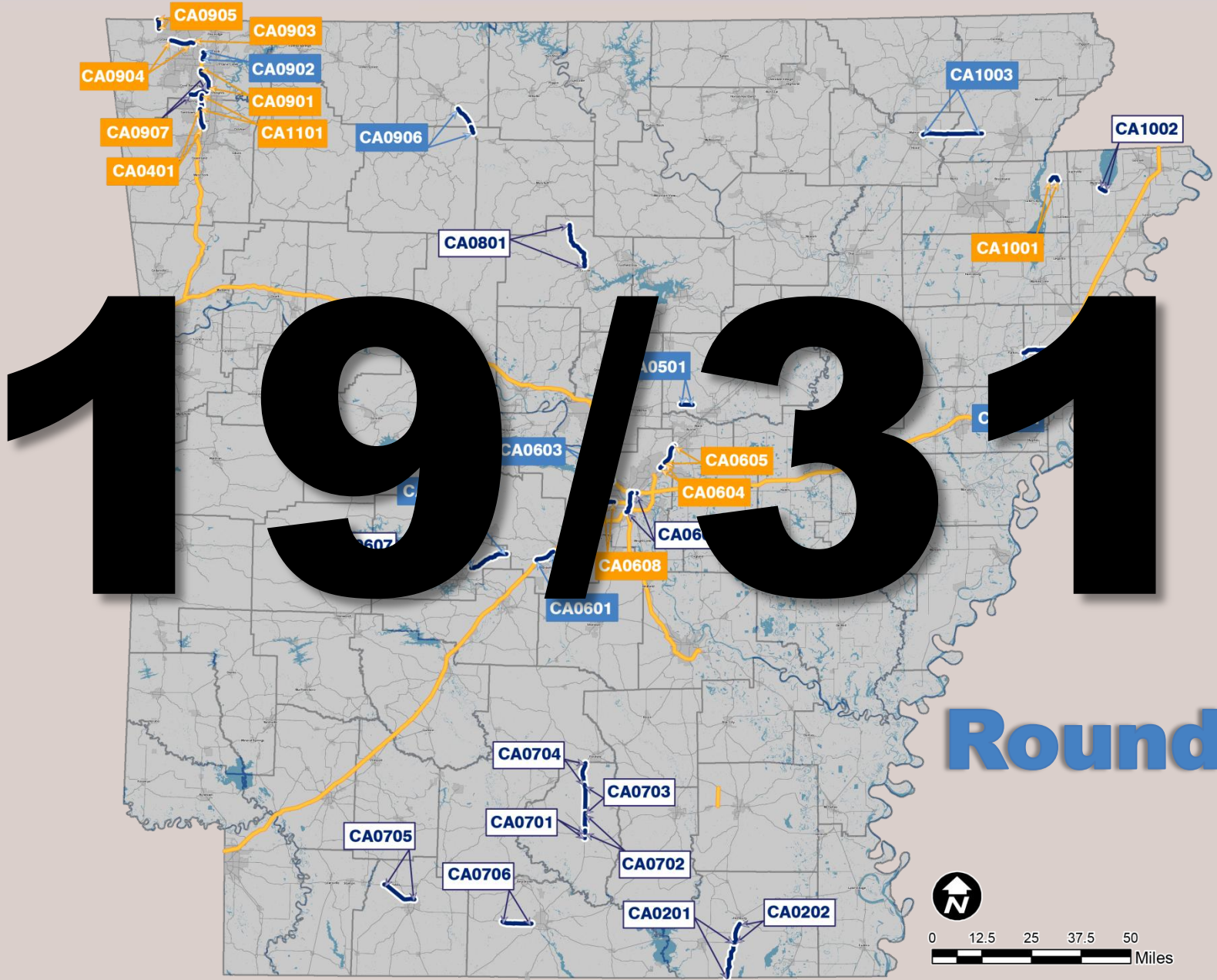
CAP Projects



CAP Projects

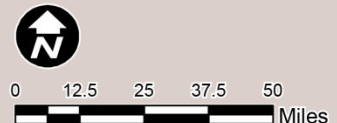


CAP Projects

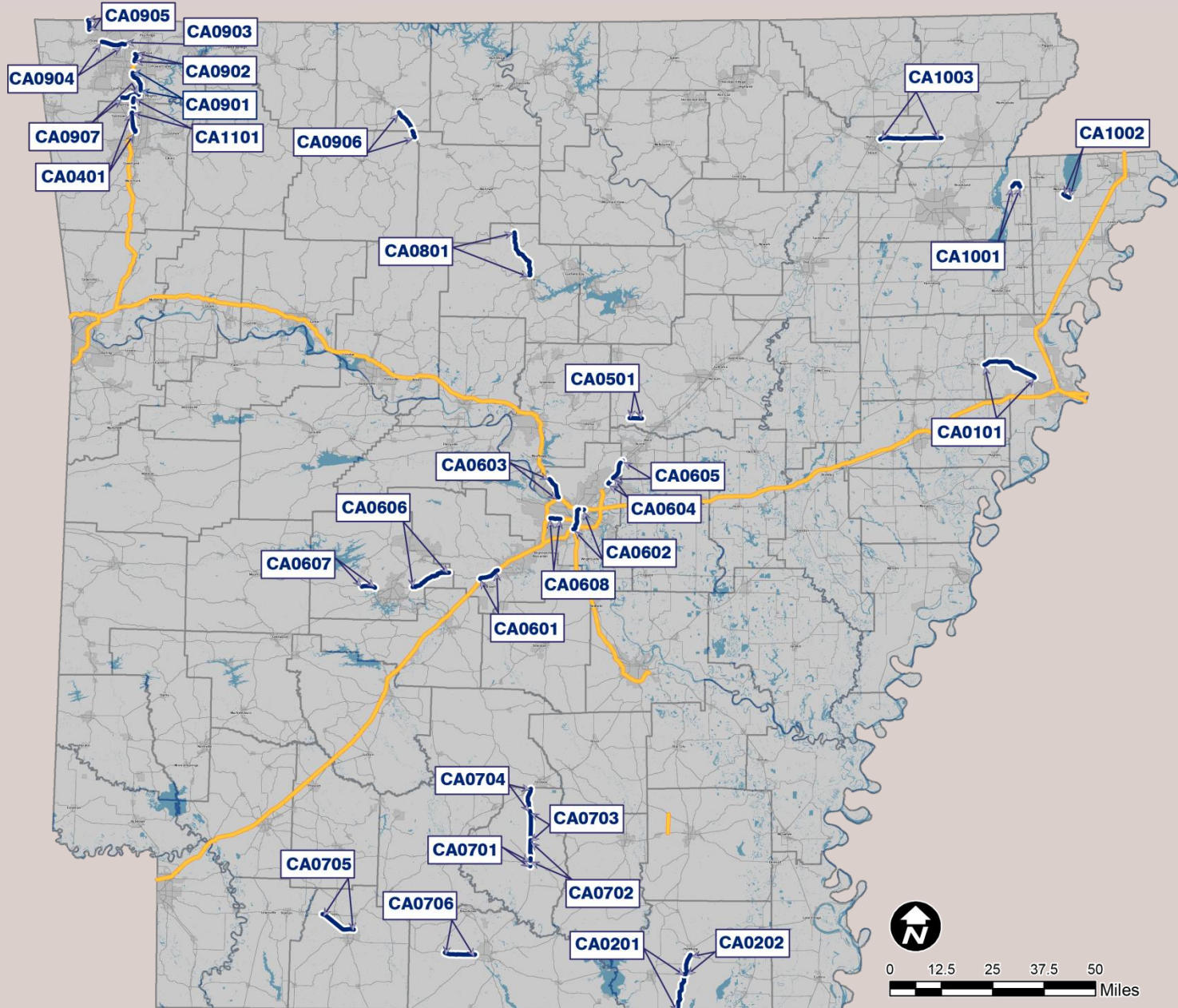


19/31

Round 2



CAP Projects

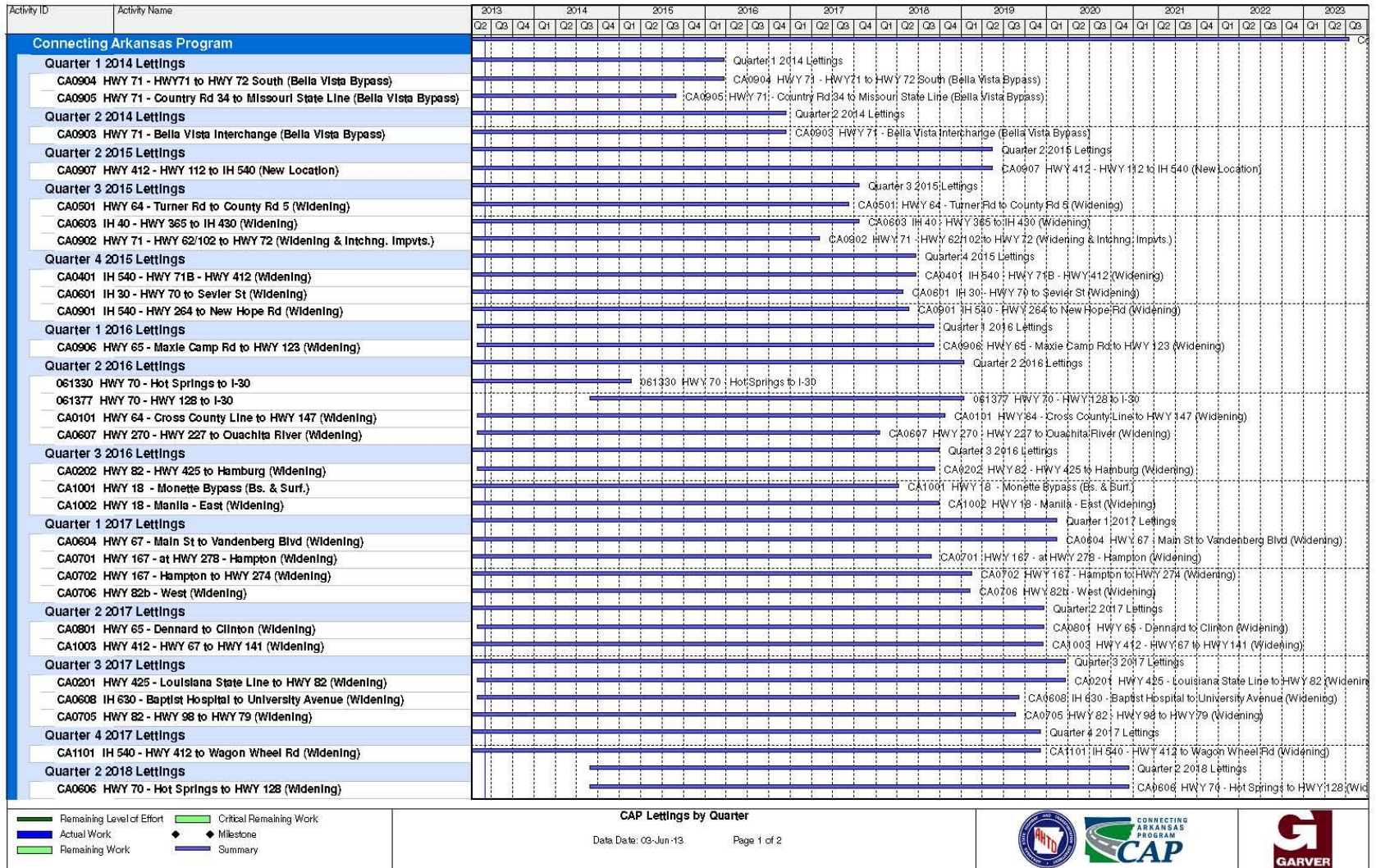


First Construction Project

Bella Vista Bypass (Letting: 4th Quarter, 2013)



Program Schedule



Program Objectives

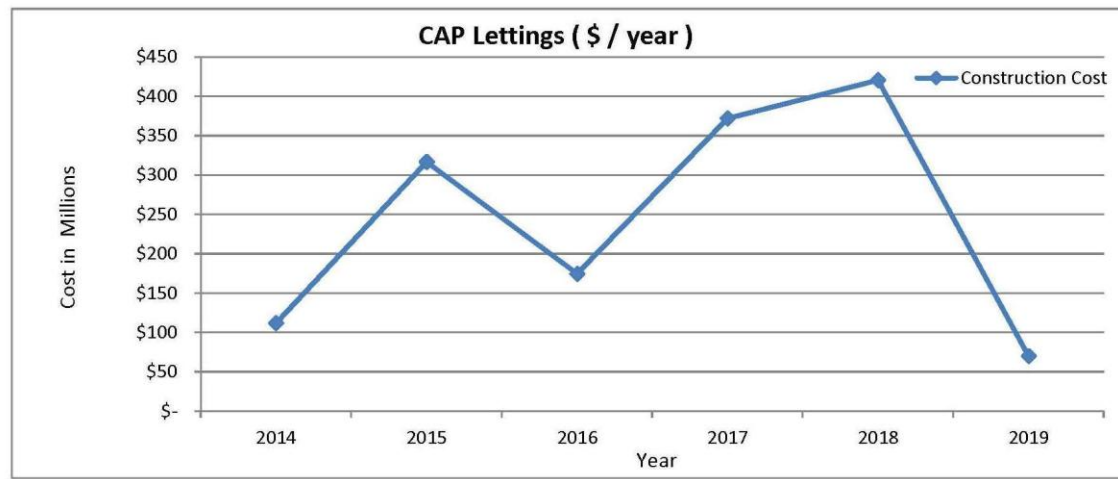
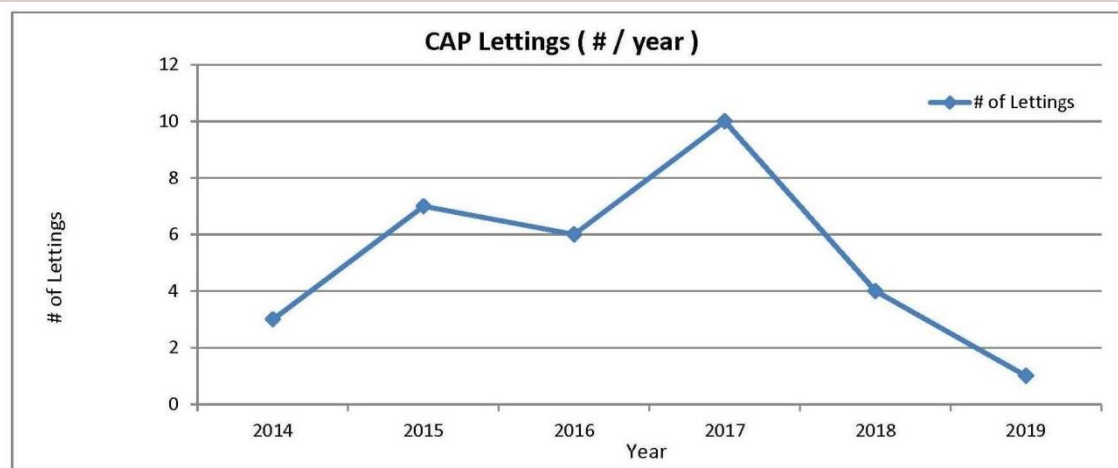
- Design complete on majority of projects within 5 years.
- Construction complete on majority of projects within 10 years.
- Balance the lettings schedule to maintain a competitive market.

Project Schedule Considerations

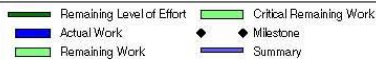
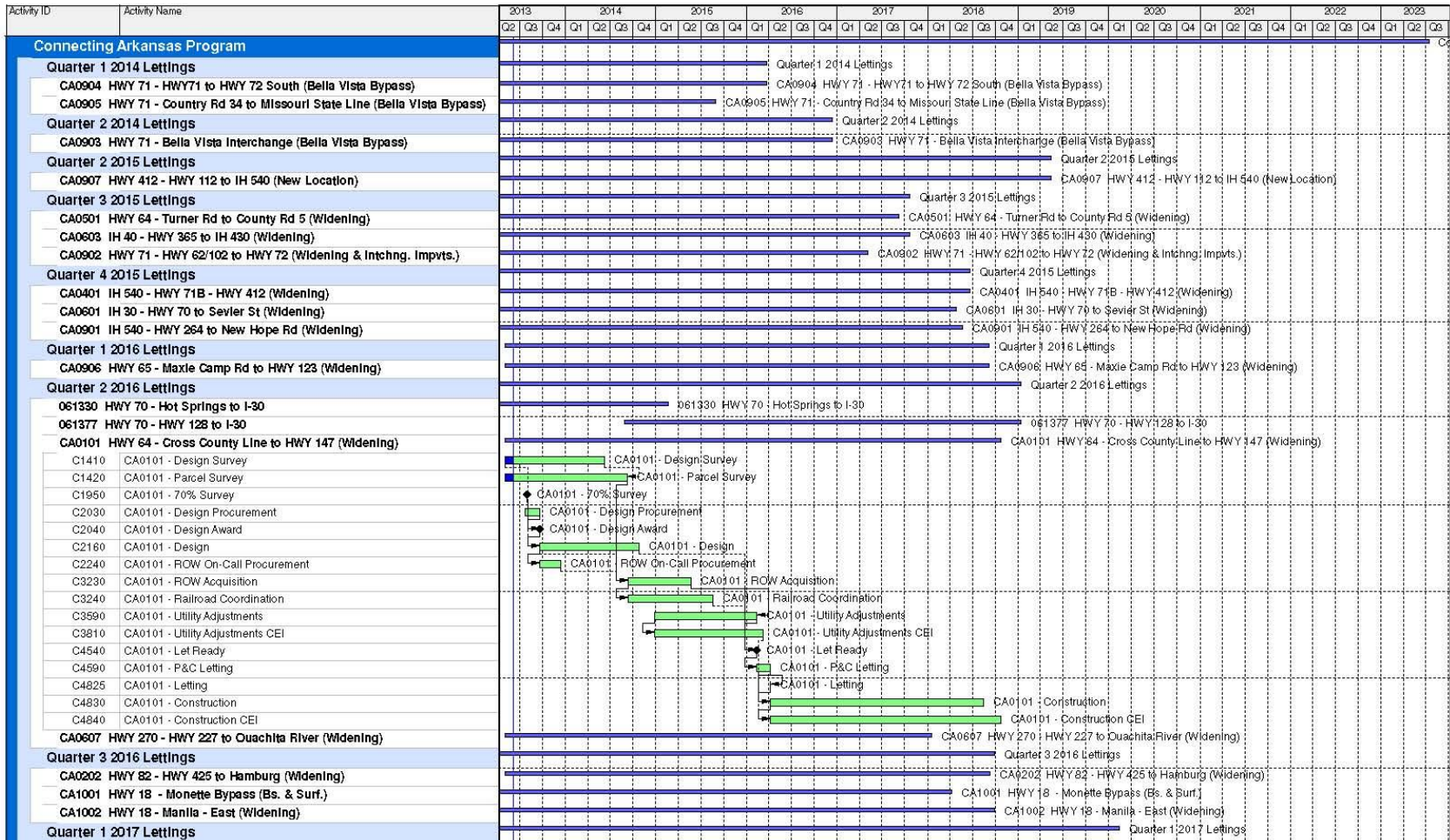
- Survey
- Environmental
- Complexity
- Right of Way
- Utilities
- Impact to Driving Public

Project Schedule

Number of Lettings and Construction Costs Per Year



Project Schedule

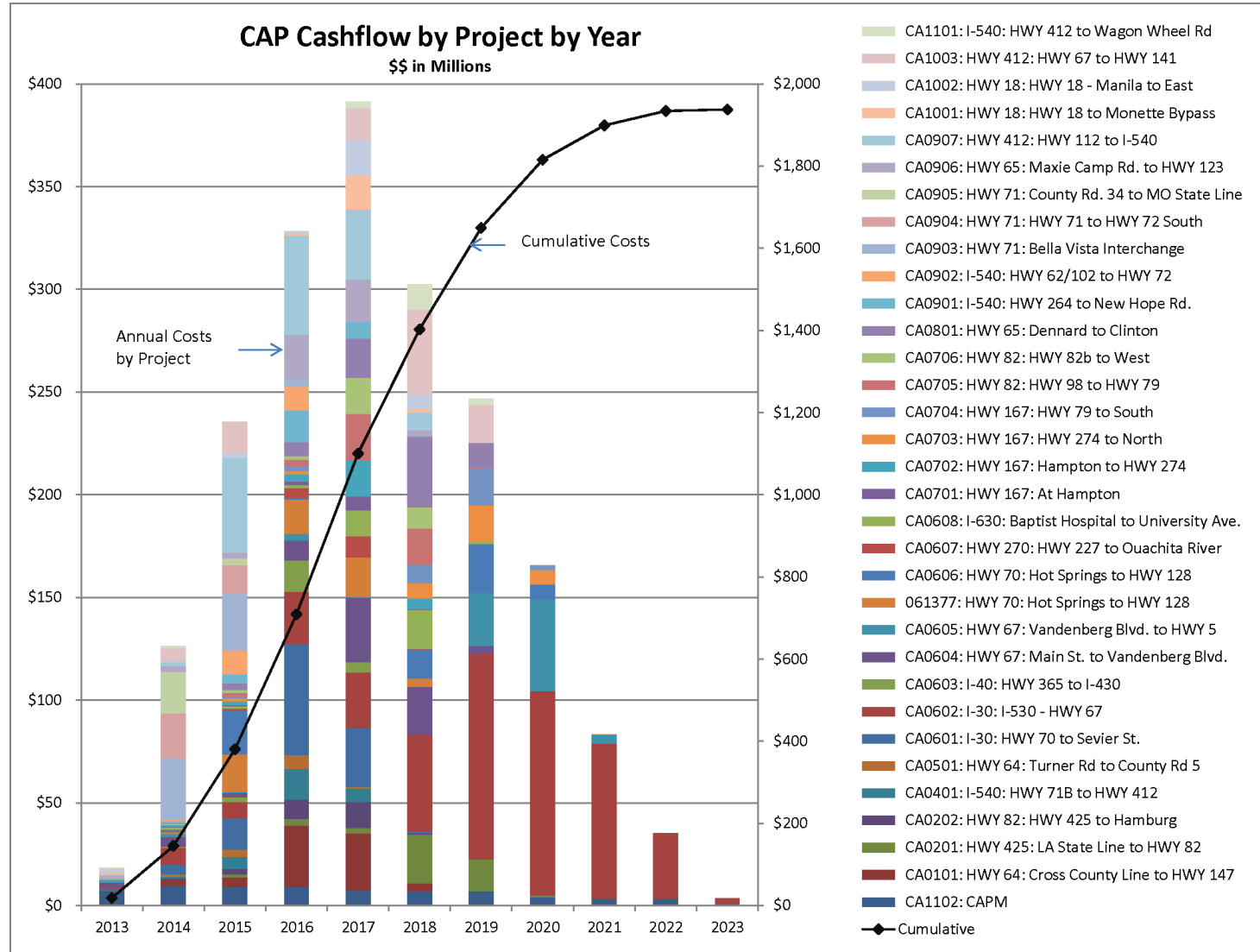


CAP Lettings by Quarter

Data Date: 03-Jun-13 Page 1 of 2



Program Cash Flow Estimate



Letting Schedule – By Date

Lettings for the Connecting Arkansas Program

Project #	Project Name	Letting
CA0903	HWY 71: Bella Vista Interchange	Late 2013
CA0904	HWY 71: HWY 71 to HWY 72 South	Late 2013
CA0905	HWY 71: County Rd 34 to MO State Line	Early 2014
CA0907	HWY 412: HWY 112 to I-540	Late 2014
CA0902	I-540: HWY 62/102 to HWY 72	Early 2015
CA0401	I-540: HWY 71B to HWY 412	Mid 2015
CA0501	HWY 64: Turner Rd to County Rd 5	Mid 2015
CA0601	I-30: HWY 70 to Sevier St	Mid 2015
CA0901	I-540: HWY 264 to New Hope Rd	Mid 2015
CA0101	HWY 64: Cross County Line to HWY 147	Late 2015
CA0603	I-40: HWY 365 to I-430	Late 2015
CA0906	HWY 65: Maxie Camp Rd to HWY 123	Late 2015
CA0202	HWY 82: HWY 425 to Hamburg	Early 2016
061377	HWY 70: Hot Springs to HWY 128	Early 2016
CA0604	HWY 67: Main St to Vandenberg Blvd	Mid 2016
CA0607	HWY 270: HWY 227 to Ouachita River	Mid 2016
CA0701	HWY 167: At Hampton	Mid 2016
CA0702	HWY 167: Hampton to HWY 274	Mid 2016
CA0706	HWY 82: HWY 82b to West	Late 2016
CA1001	HWY 18: HWY 18 to Monette Bypass	Late 2016
CA1002	HWY 18: HWY 18 - Manila to East	Late 2016
CA0608	I-630: Baptist Hospital to Fair Park	Early 2017
CA0705	HWY 82: HWY 98 to HWY 79	Early 2017
CA0801	HWY 65: Dennard to Clinton	Early 2017
CA1003	HWY 412: HWY 67 to HWY 141	Mid 2017
CA1101	I-540: HWY 412 to Wagon Wheel Rd	Mid 2017
CA0201	HWY 425: LA State Line to HWY 82	Late 2017
CA0602	I-30: I-530 - HWY 67	Early 2018
CA0606	HWY 70: HWY 128 to I-30	Early 2018
CA0703	HWY 167: HWY 274 to North	Mid 2018
CA0704	HWY 167: HWY 79 to South	Mid 2018
CA0605	HWY 67: Vandenberg Blvd to HWY 5	Early 2019

Next Steps

1. Negotiate and Contract 8 More Projects By October (19 of 31)
2. Receive 30%, 60%, 90% on 6 NTP's
 - Estimates with each submittal
 - Schedules with each invoice
3. Develop Project Management Plan for CA0602 (I-30 over the Arkansas River)

Next Steps

4. Website Launch – September

- Maps
- Project Updates
- Program Overview and Status
- Public Meeting Info
- News Releases and Lane Closures
- Linked to iDriveArkansas

The screenshot shows the homepage of the Connecting Arkansas Program (CAP) website. The header features the CAP logo and navigation links: Home, Overview, Projects, Community, News Room, Contacts, FAQs, and iDriveArkansas. The main content area includes a map of Arkansas with red location markers, a 'Connecting Arkansas Program' information box, a 'What is the Connecting Arkansas Program?' section with a road image, a 'Latest News Updates' section with three news items, a 'Still Have Questions?' section with an FAQ icon, and a footer with contact information and a 'Send Query' button.

Connecting Arkansas Program

Thirty-one projects in 19 corridors across Arkansas are included in the Connecting Arkansas Program.

To see the projects in your area, click on a region of the map to the left, select a region below, or visit our projects page.

Central
North West
North East
South

[Browse the CAP Project Map](#)

What is the Connecting Arkansas Program?

The CAP improves transportation connections to the four corners of Arkansas, increases capacity by widening many highways to four or more lanes, improves traveler safety, eases congestion, and supports Arkansas' job growth and economy.

"The voters of Arkansas have put a great deal of trust in the State Highway and Transportation Department," said AHTD Director Scott Bennett. "We must work diligently to deliver this program's projects on time, on budget, and with high quality to maintain that trust."

[Learn more about CAP](#)

Latest News Updates

Groundbreaking Scheduled for Bella Vista Bypass Projects
Three projects will soon be underway to complete the initial two lanes of the Bella Vista Bypass

Consultants Selected for CAP Projects
To date, design consultants have been assigned to 19 of the 31 Connecting Arkansas Program projects.

Garver to Manage Road Projects
Garver is the Arkansas Highway Commission's choice to manage the state's \$1.8 billion road-construction program.

[Visit the CAP Newsroom](#)

Still Have Questions?

When does the half-cent sales tax begin?
The tax began July 1, 2013 and will sunset in 2023.

What is the first project that will begin construction?
Job CA0905 County Road 34 to the Missouri State Line is part of the Bella Vista Bypass and will be the first project let to construction.

I live near one of the CAP projects. Where can I find out about public meetings?
You can visit the Community Map to see a schedule of meetings in your area. You can also visit any project page to see if any public meetings are scheduled for that project.

[View Frequently Asked Questions](#)

Connecting Arkansas Program

CAP Overview
CAP Projects
CAP Overview
CAP Projects
Community Meetings
News Updates
Contacts
FAQs

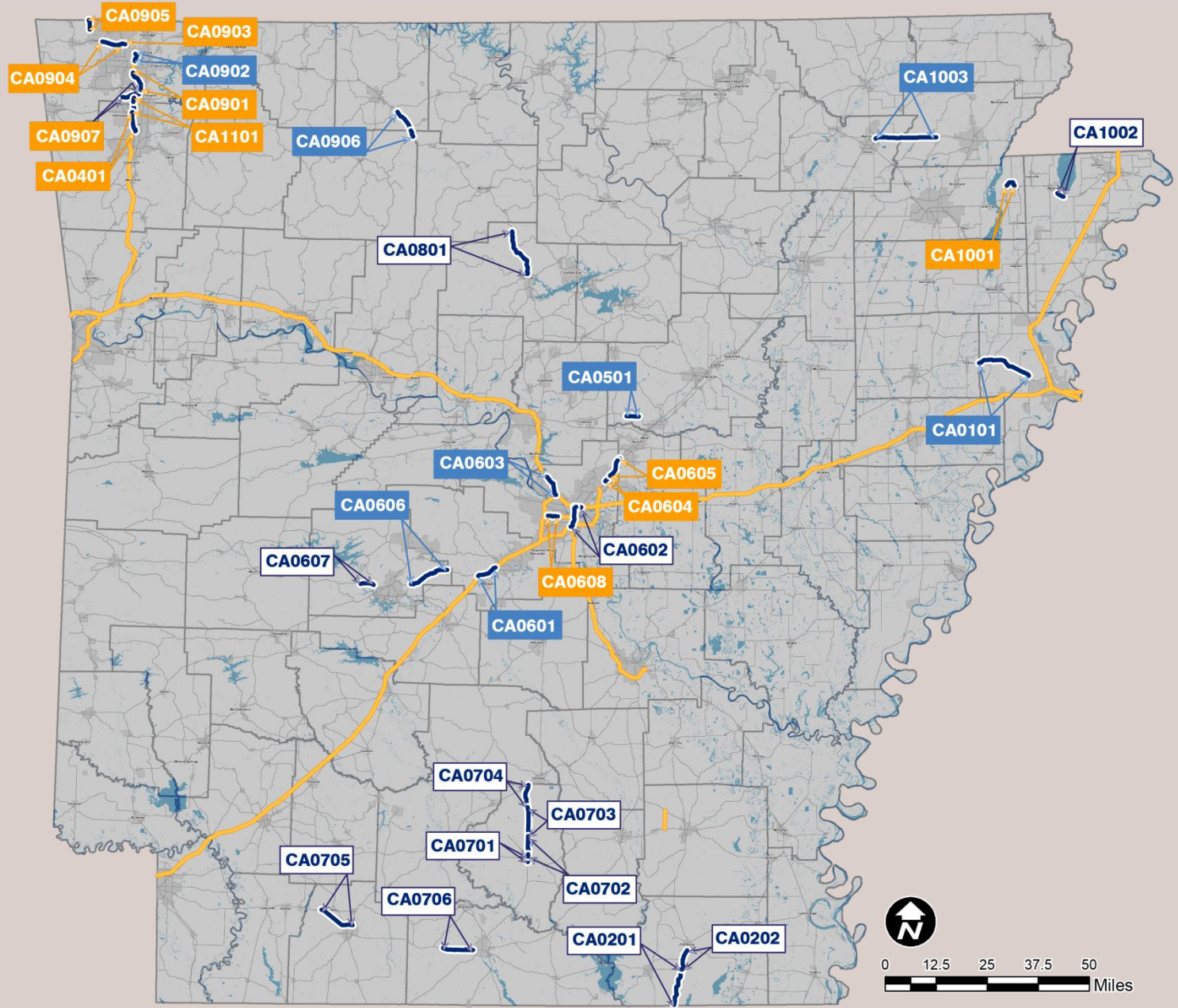
Contact Information

Connecting Arkansas Program Information
CAP Information Line
661-655-5555
Inquiry@cap.mt
Click here for a full list of contacts

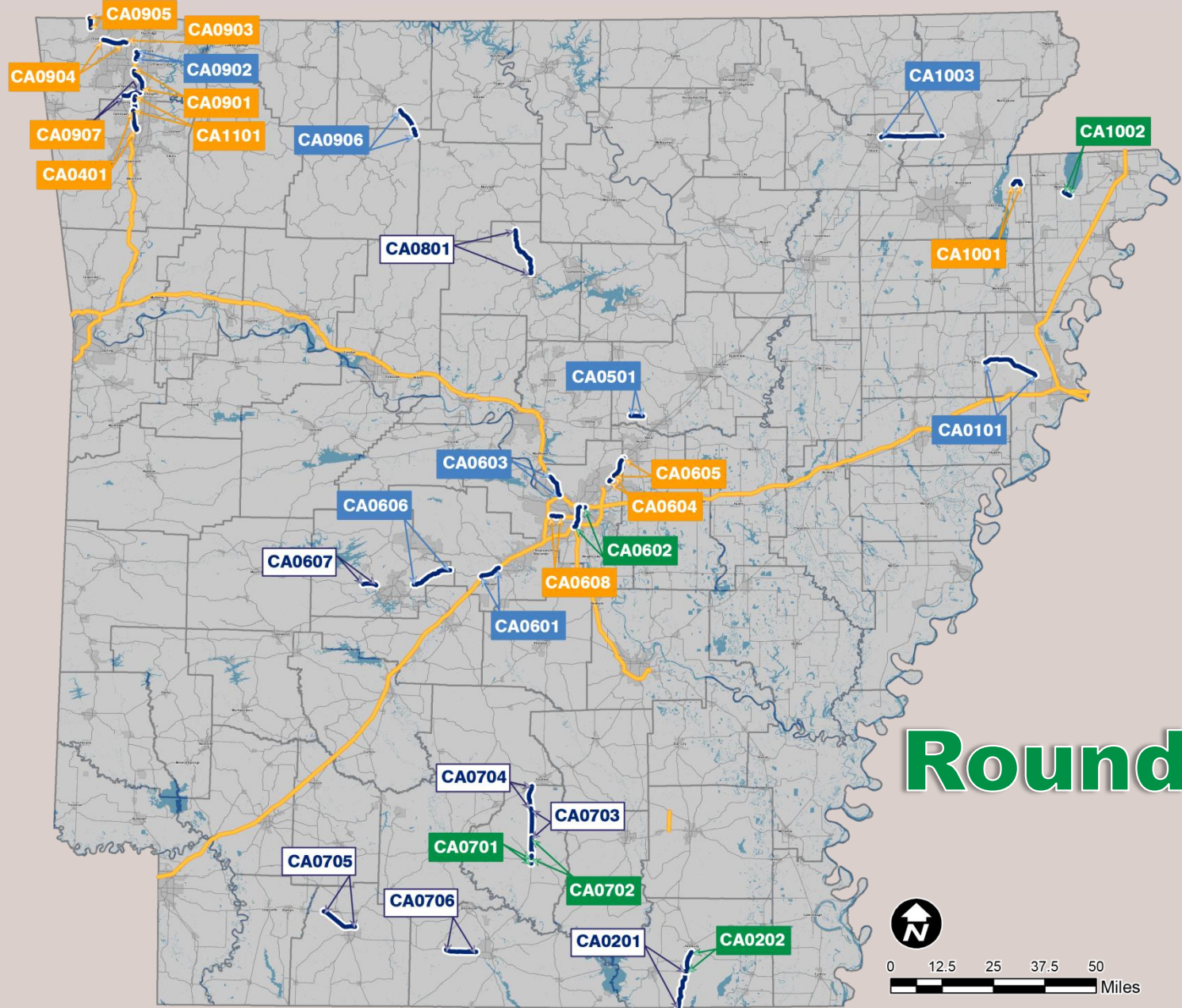
Name:
Email:
Message:

[Send Query](#)

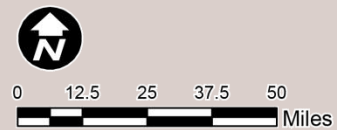
Next Steps



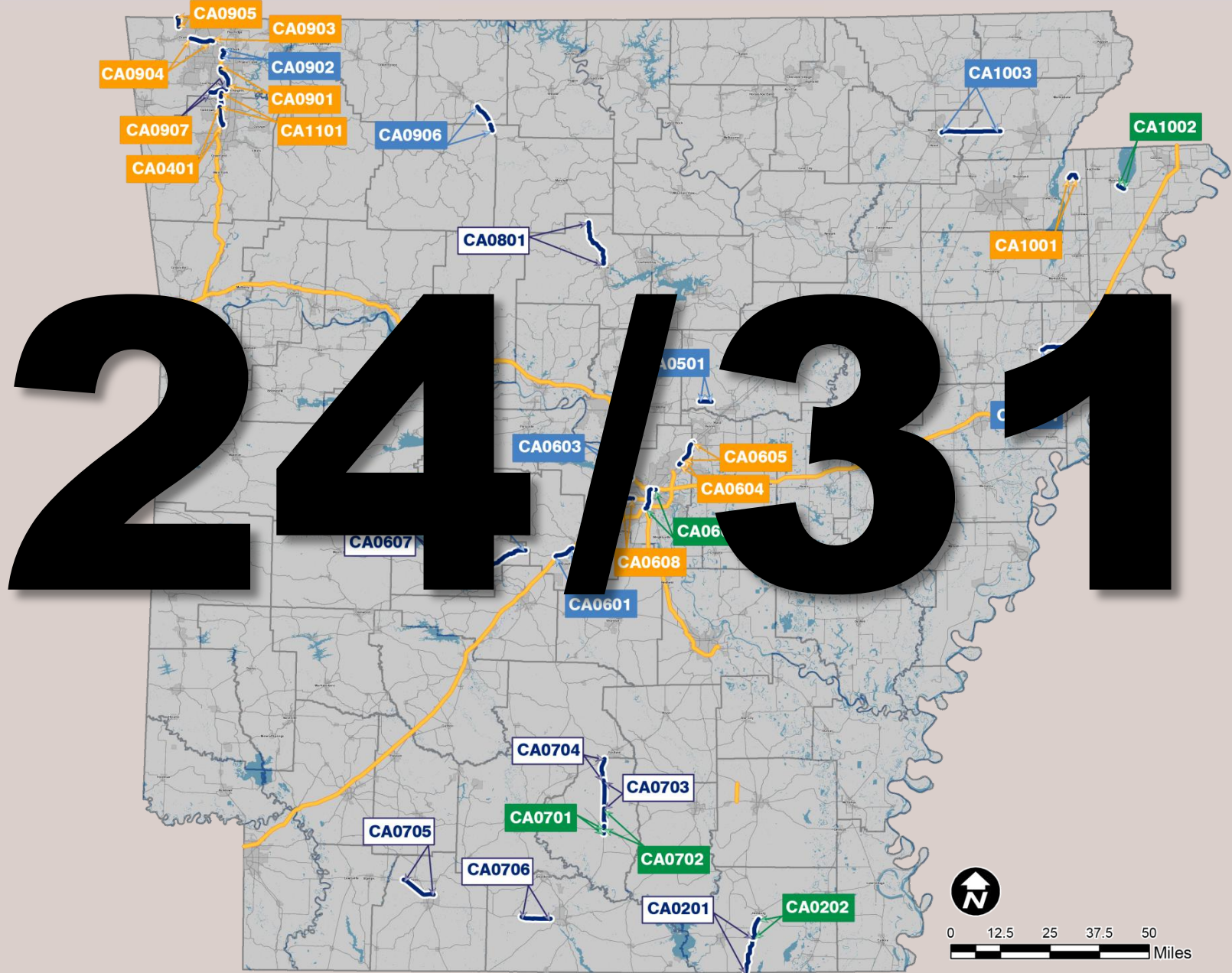
Next Steps



Round 3



Next Steps



CAP Update

QUESTIONS?

Design-Build

1. Risk Assessment

- Most complex design
- Highest Risk Project from budget standpoint
- Monte Carlo Analysis

2. Environmental and Schematics

- 30% maximum – room for innovation
- Make sure it can be done – no fatal flaws
- Set NEPA footprint to operate within

3. Schedule

4. Procurement

- D/B to a Budget?

5. OV&T

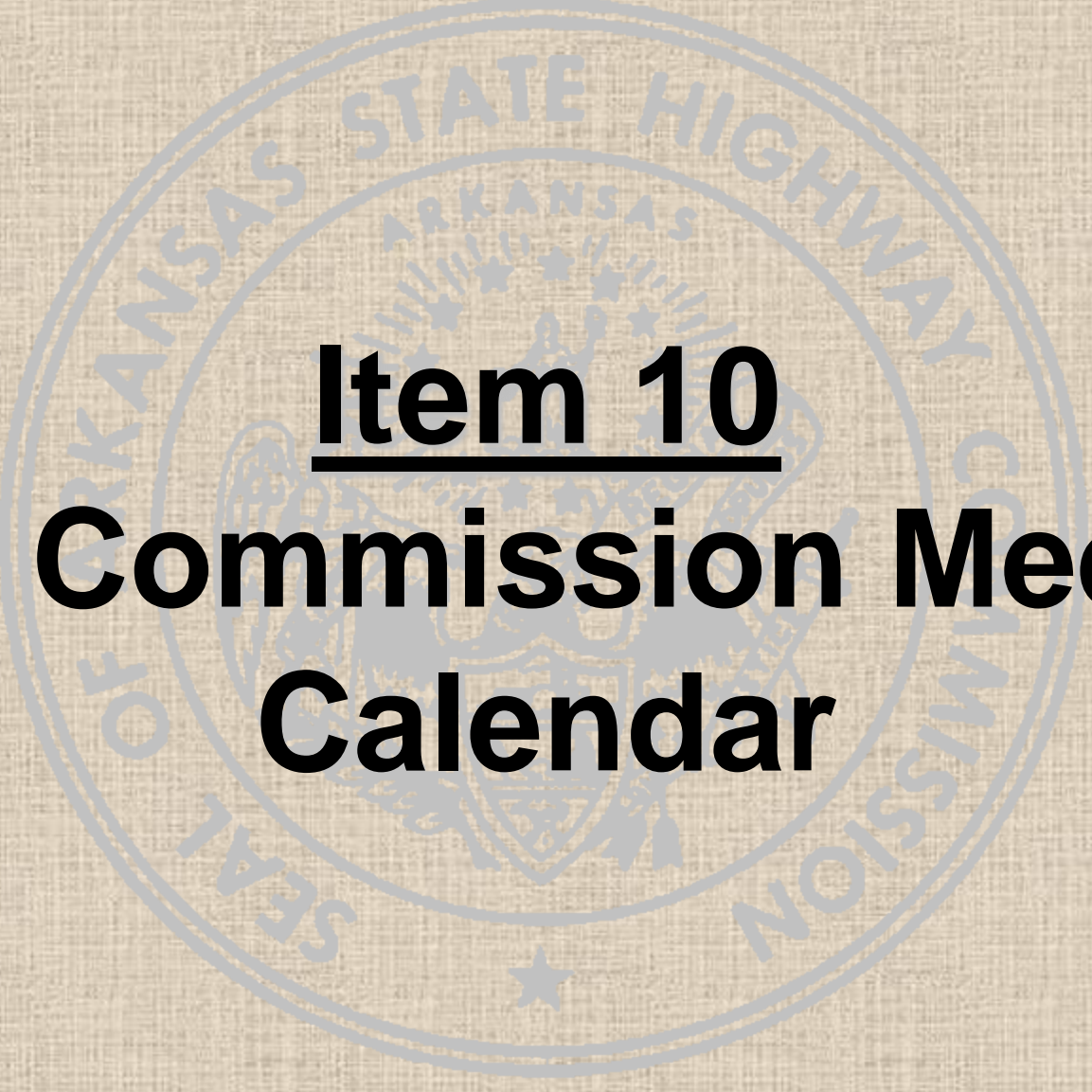


Item 8

**Connecting Arkansas
Program
Financing Schedule**



Item 9
**Advertisement for
Auctioneer Services**

The background features a large, faint, circular seal of the Arkansas State Highway Commission. The seal contains the text "ARKANSAS STATE HIGHWAY COMMISSION" around the perimeter and "SEAL OF THE ARKANSAS STATE HIGHWAY COMMISSION" in the center. The seal also includes a central emblem with a shield and stars.

Item 10
**2014 Commission Meeting
Calendar**

The background features a large, faint, circular seal of the Arkansas State Highway Commission. The seal contains the text "ARKANSAS STATE HIGHWAY COMMISSION" around the perimeter and "ARKANSAS" in the center. In the center of the seal is the state coat of arms of Arkansas, which depicts a plow, a sheaf of wheat, and a cotton plant, with a star above them.

Item 11
**Other Business &
Discussion**



Arkansas State Highway Commission Meeting

Wednesday, July 24, 2013